



SV1930D, SV2032D & SV2632D

SCISSOR LIFTS

19-26 FEET

PERFORMANCE

- ▶ **An exclusive brushless AC drive system** is featured on all Aichi SV electric scissor lifts to provide leading performance with minimum service requirements. This industry-first drive system features no directional contactors to maintain and has run times up to 1.5 times greater than DC or hydraulic based systems.
- ▶ **The compact steer system** allows for a full 90-degree turning angle, giving the SV-Series a very tight turning radius.
- ▶ **An extra long 39-inch extension platform** allows the operator to work a larger area to increase productivity without moving the unit.
- ▶ **While descending a slope,** the SV-Series keeps the speed of the unit at a constant rate to improve handling and control.
- ▶ **Fold down hand rails** are easily collapsed by simply removing some pins to fit through narrow aisles and doorways.
- ▶ **An optional proportional steering system** is featured on the SV-Series offering steering wheel style control and auto-centering steering system. This allows a wide range of operators to become quickly familiar with operating the unit.

- ▶ **The SV-Series** features one of the lowest stowed heights of all models in the industry. The fold down handrail system includes a spring loaded entry gate.





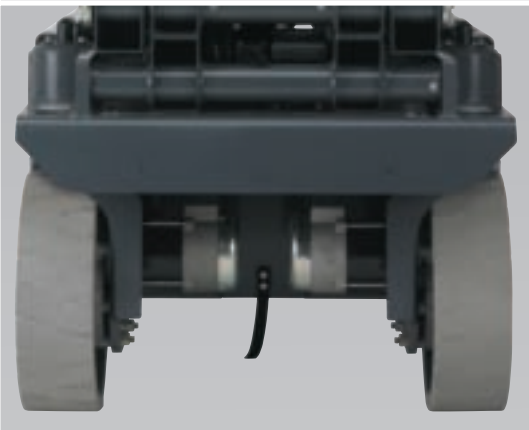
DURABILITY

- ▶ **The SV-Series** features all steel construction of both the chassis and the platform.
- ▶ **The platform features** heavy wall square tubing for the platform rails to provide a very strong rail system.
- ▶ **End caps** are found in all tube ends and the lower rail sections have nylon bushings to allow easy extension of the deck.
- ▶ **All items such as cords and plugs** are routed to limit damage from impacts while driving the unit, keeping repairs to a minimum.



- ◀ **Recessed lower control panel** provides easy control of the unit while providing protection from damage.

SERVICEABILITY



- ◀ **The Aichi AC drive system** features AC Brushless motors to create a virtually maintenance free drive system.



- ◀ **Batteries are contained** in a single easy to slide out side compartment. Full access is provided without tipping down the compartment or having to go from one side of the unit to the other.



- ◀ **The hydraulic and controller section** is easily accessed on a swing out tray, keeping service time to a minimum.



AICHI "2-3-5" Warranty

As the market leader in Japan, Aichi builds on the Toyota reputation for quality, durability and reliability by offering high value and innovative products with one of the best manufacturer's warranty available today.

THE AICHI WARRANTY

2-year basic

3-year hydraulic

5-year structural

COMPETITORS' WARRANTIES

1-year basic

2-year hydraulic

2 to 5 year structural

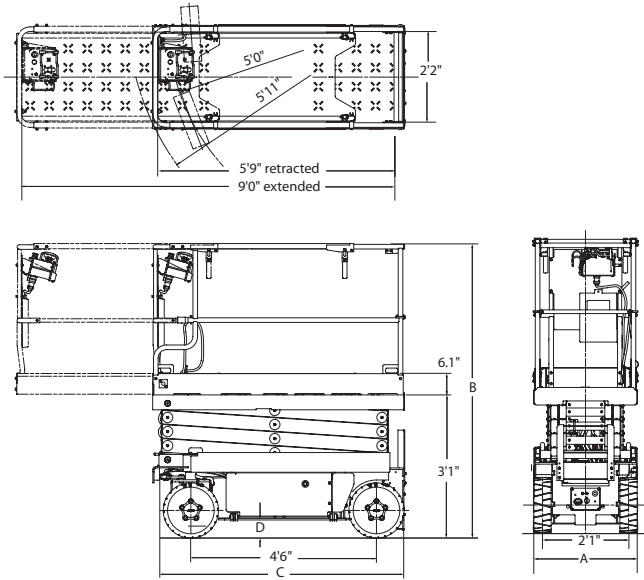
2.3.5
YEAR YEAR YEAR
WARRANTY



AICHI
A TOYOTA INDUSTRIES COMPANY

DIMENSIONS

SV1930D



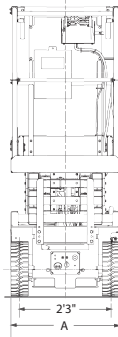
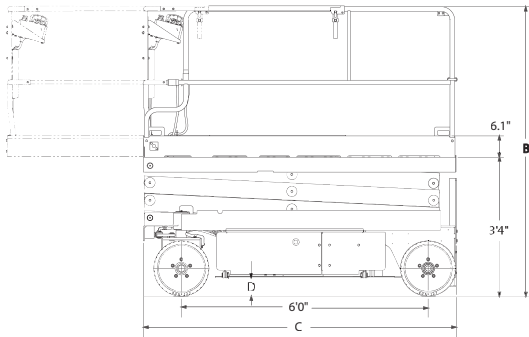
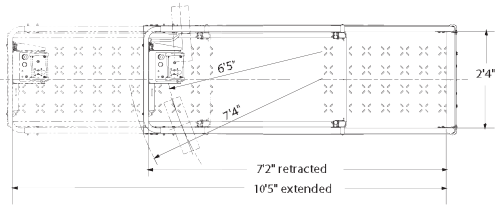
SPECIFICATIONS

MODEL	
Model	SV1930D
PLATFORM	
Platform Capacity	500 lbs
Platform Extension	3'3"
Platform Height - Elevated	19'1"
Platform Height - Lowered	3'6"
Platform Size (L x W x H)	5'9" x 2'2" x 3'7"
LIFT & LOWER SYSTEM	
Type	4-Stage Scissor Link
Lifting / Lowering Time	30 sec
POWER SYSTEM	
Voltage	24V
Drive System	Brushless AC Motors
TRAVEL PERFORMANCE	
Speed (Max)	2.8 mph (Stowed) / 0.5 mph (Elevated)
Gradeability	25%
Tire Type	Solid
DIMENSIONS	
A Overall Width	2'6"
B Overall Height Fixed/Folded	6'11" / 6'2"
C Overall Length	6'1"
D Ground Clearance	5.2" (Stowed) / 0.75" (Elevated)
Vehicle Weight	3,307 lbs
OPTIONAL EQUIPMENT	
Proportional Steering, Fixed Handrails, Lifting Kit & Flashing Beacon	

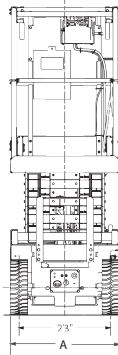
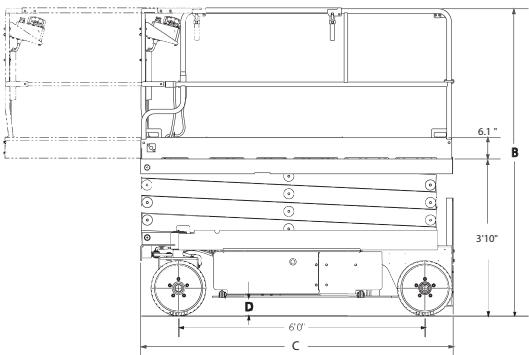
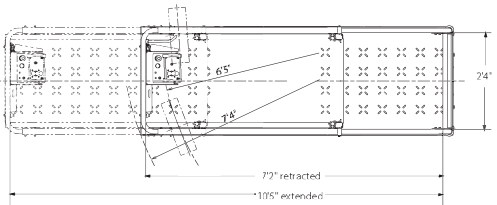


DIMENSIONS

SV2032D



SV2632D



SPECIFICATIONS

MODEL		
Model	SV2032D	SV2632D
PLATFORM		
Platform Capacity	800 lbs	500 lbs
Platform Extension	3'3"	
Platform Height - Elevated	20'	25'6"
Platform Height - Lowered	3'4"	3'10"
Platform Size (L x W x H)	7'2" x 2'4" x 3'7"	
LIFT & LOWER SYSTEM		
Type	3-Stage Scissor Link	4-Stage Scissor Link
Lifting / Lowering Time	30 sec	40 sec
POWER SYSTEM		
Voltage	24V	
Drive System	Brushless AC Motors	
TRAVEL PERFORMANCE		
Speed (Max)	2.8 mph (Stowed) / 0.5 mph (Elevated)	
Gradeability	25%	
Tire Type	Solid	
DIMENSIONS		
A Overall Width	2'8"	
B Overall Height Fixed/Folded	6'11" / 6'1"	7'4" / 6'5"
C Overall Length	7'6"	
D Ground Clearance	4.4" (Stowed) / 0.6" (Elevated)	
Vehicle Weight	3,715 lbs	4,288 lbs
OPTIONAL EQUIPMENT		
Proportional Steering, Fold Down Handrail, Fixed Handrail, Flashing Beacon		



///MHI
A TOYOTA INDUSTRIES COMPANY

1 800 852 0024

toyota-construction.com

©2013 Toyota Material Handling, U.S.A., Inc.

Details of specification and equipment are based on the information available at the time of printing and may change without notice. Some product features described herein are optional. Not all models and specifications available in all locations. Please contact your dealer for complete details.

0A722-SL200-309 5/13
Litho in U.S.A. (1M)
©2013 Toyota Material Handling, U.S.A., Inc.