

CROWN

WAV 60 SERIES



The Mobility Revolution

Crown's Work Assist Vehicle®, the Wave, is a revolutionary mobile productivity tool that enables one person to efficiently and safely do the work of two. It dramatically changes the way work is accomplished: eliminating time-consuming ups and downs, and minimizing the risks of using rolling ladders. Plus, it provides the ability to elevate and travel simultaneously in one smooth motion.

Beyond easing work and boosting productivity, the Wave delivers significant savings opportunities through greater efficiency, task flexibility, improved safety and lower total costs.

It's time to ride the Wave®.



Visit crown.com

See the WAV 60 Series



Diverse Applications

The Wave is ideal for many applications, from small parts picking to facilities maintenance.

It supports productive and safe work in busy, confined spaces where workers move short and long distances. It's also proven in environments where small loads are handled in receiving, shipping and put-away, such as retail and manufacturing applications.

The Wave is an intuitive solution for almost any facility that currently uses ladders to access high places. With the Wave, users can avoid or eliminate the use of ladders for faster, safer and easier work practices.



Productivity

Navigate narrow aisles, access items at height, and quickly cover distance with travel speeds up to 5 mph.



Safety

The Wave's four-point system enhances workplace well-being by reducing the risk of injury and accidents associated with everyday tasks such as lifting, climbing and carrying.



Flexibility

Take advantage of the Wave's compact size, exceptional maneuverability and proven performance in countless applications.



Savings

Reduce labor, decrease effort, save time, lower costs and diminish exposure to injury by creating a safer and more efficient work environment.

Productivity Achieved

The Wave, with AC motors and controls, allows operators to accomplish more with maximum travel speeds at 5 mph. Operators can also reach work with confidence to nearly 17 feet, which dramatically increases productivity and lowers risk of product damage.

The Wave also eliminates climbing and reduces heavy, awkward lifting while providing stable footing. Plus, there's no need to move cumbersome ladders from place to place.

Work faster and more efficiently with the innovative Crown Work Assist Vehicle. With the Wave, operators can easily move merchandise and materials, reach the required elevation, and complete the task at hand in less time than it may take to simply walk to the picking location.



Maneuver with Ease

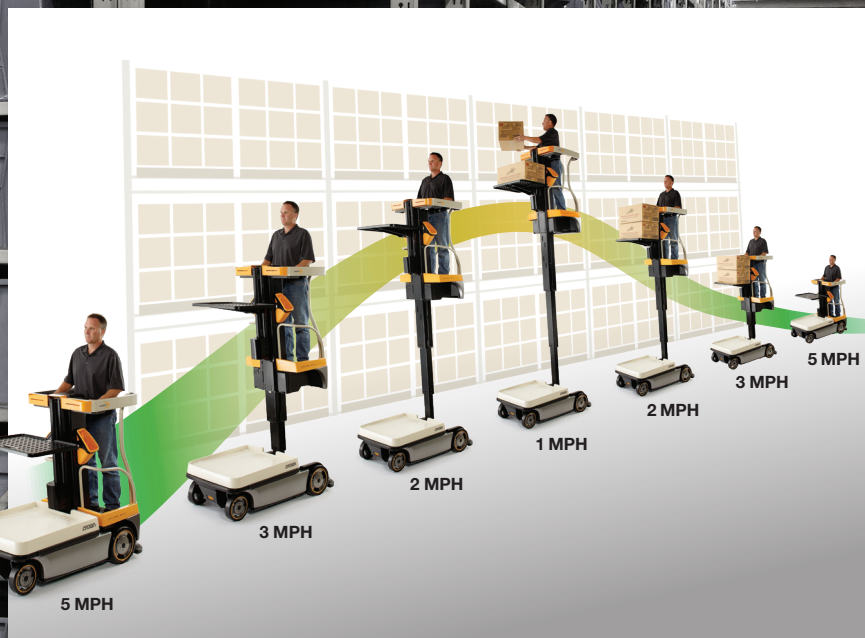
With a small footprint and zero turning radius, the Wave can fit in smaller spaces. It easily navigates 32-inch doorways, maneuvers around corners and traverses tight spaces, enabling you to make the most of your facility by storing more products in less space.





eGEN Braking gives you an edge in performance, service and cost of ownership by eliminating traditional friction brakes, providing:

- Variable motor braking, specific to conditions
- Reduced maintenance (fewer parts and wear points)
- Automatic parking brake engagement

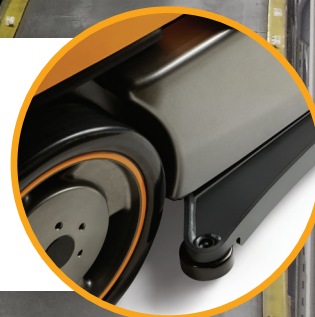


Simultaneous Travel and Lift

With productivity in mind, Crown designed the Wave to travel and lift simultaneously, so operators can move around a facility while raising or lowering to the appropriate heights in one smooth, seamless operation. The Wave reaches a maximum speed of 5 mph and adjusts speed based on lift height.

Rail Guidance System

This optional infrastructure offers even more time- and cost-saving advantages by reducing required aisle width to 36 inches, and allowing operators to travel and reach various heights in one fluid motion. The Wave, combined with the rail guidance system, helps you take advantage of every square foot in your warehouse without implementing automation.





Ergonomically Designed
The Wave is designed for smooth elevation and stable reach when lifting and placing loads, reducing operator fatigue.

Safety with Every Turn

The Wave is a versatile and user-friendly vehicle, enabling operators to work with confidence. Its built-in system of protection and control starts the moment the operator turns the key switch. A security check verifies safety devices are functioning properly before the vehicle will start up. It then coordinates the functional display, manages lift/lower operations, and controls travel speeds, steering and braking so the operator can focus on the task at hand.

Crown's Access 1 2 3 Comprehensive System Control monitors and controls vehicle functions and provides the operator with feedback for safe, reliable performance. The intuitive display offers:

- Event Codes
- Prompting Operator Messages
- Fully Adjustable Performance Levels
- Advanced Diagnostics



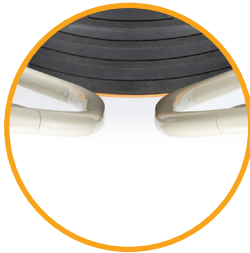
Enhanced Operator Control and Safety

Crown's Four-Point Safety System

is designed to ensure safety for Wave operators and bystanders.

1. Interlocking Gates

must be closed to raise above 20 inches. Travel speed is reduced when the gates are closed. When traveling at full speed, the Wave requires gates be opened to allow an unobstructed exit in the event of an emergency.



2. Safety Sensors Below the Platform

disable raise, lower and travel if someone or something applies pressure to the motor cover located below the platform.



3. Hand Sensors ensure the operator has both hands on the controls for normal travel and lift functions. If necessary, either hand can be removed to balance or steady a load, but traction and lift/lower functions will be limited.



4. Dual Foot Pedals include sensors to ensure the operator has both feet properly positioned on the platform. The Wave automatically stops travel and lift/lower functions if either foot is removed.



Application Flexibility

The Wave's compact footprint and simple operation make it a perfect solution for work environments that require lifting or moving loads. Crown's lead-acid and lithium-ion battery options allow for a tailored energy solution to meet your application requirements. When recharging is needed, the Wave simply plugs into any standard power outlet.

Retail



Distribution/Small Parts Picking



Food and Beverage



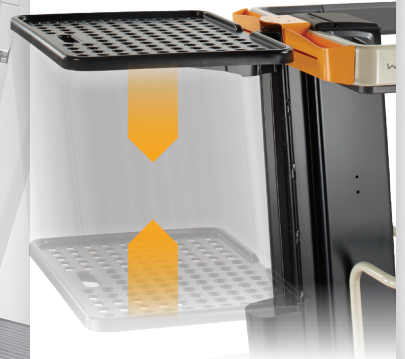
Facilities



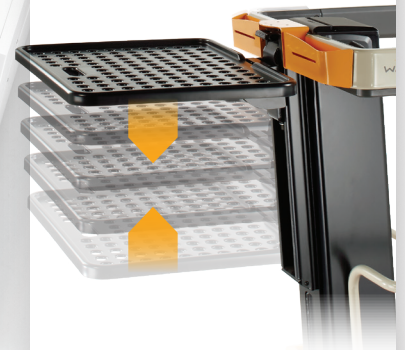


Optimized Utility

Powered load tray (optional) with infinitely variable position allows the operator to adjust the height of the tray, even while loaded, for flexibility with any load.



Five position manual load tray (standard) accommodates loads of varying shapes and sizes. The tray can also fold and stow away when larger loads are needed on the load deck.



Serious Capacity

The Wave's load tray supports up to 200 pounds, while the load deck holds up to 250 pounds, going far beyond what workers can safely lift and move using ladders.

Savings Add Up

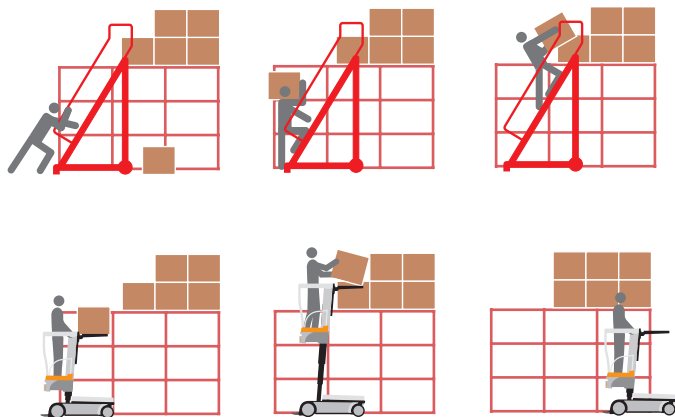
The Wave cuts labor in half for many routine activities by enabling a single employee to accomplish tasks that typically require two. Beyond tremendous efficiency gains, enhanced safety can lower costs associated with workers compensation, lost time and product damage. Consider this formula for your operation:

Labor is cut in half

+ Lost time expense reduction

+ Product damage reduction

= Operational cost savings



Using a traditional ladder can be cumbersome, time-consuming and dangerous for employees because it requires them to handle heavy loads at height.

Using the Crown Wave increases labor and time savings, while allowing operators to safely and efficiently move product or materials.



The Wave Saves in So Many Ways

It only took a few hours of use by employees at a True Value Hardware Cooperative for co-owner Rob Kuenning to say, "We have to have one." Today, multiple Wave units are used in two company locations, the largest of which is a 40,000-square-foot retail space.

Prior to using the Wave, employees there depended solely on ladders to handle stock above floor level. Even after 15 years of use, they are finding new ways to use the Wave and are still seeing noticeable improvements in efficiency and safety.

"Our Waves are used constantly, multiple times a day by many of our employees," Rob said. "They can handle large loads once instead of moving up and down a ladder multiple times, and they enjoy maximum visibility and ease of use."

They also haven't experienced any injuries from transporting and retrieving items at height since the first Wave was deployed.

"Safety is at the forefront of our operation and the Wave helps us maintain this focus," Rob explained. "There is nothing we cannot do with the Wave in our facility. I would definitely recommend it to others. I cannot imagine doing business without it."



More Uptime for Your Investment

Crown's integrated approach combines truck feedback and diagnostics, Crown-made parts and dedicated service teams to give you more uptime and a low total cost of ownership.





Access 1 2 3® technology enables advanced diagnostics through an intuitive display. This diagnostics system, used across all Crown trucks, increases technician proficiency, resulting in significant savings in service time and costs.

InfoLink® is a wireless operator and fleet management solution that puts the power of accurate, up-to-date business metrics right at your fingertips.

Crown's InfoPoint® on-truck component maps provide service engineers with vital information to quickly, accurately and easily resolve issues without wiring diagrams or schematics.

Crown's Integrity Parts and Service System® solution ensures long-term truck performance by matching trained service engineers with Crown-made parts for long-lasting performance.

Change the Way You Work with the Wave.



Visit crown.com

See the WAV 60 Series



Clean Environment. Smart Business.

Printed on elemental chlorine free and sustainably forested paper.



You can count on Crown to build lift trucks designed for safe operation, but that's only part of the safety equation. Crown encourages safe operating practices through ongoing operator training, safety-focused supervision, maintenance and a safe working environment. Go to crown.com and view our safety section to learn more.

Crown Equipment Corporation
New Bremen, Ohio 45869 USA
Tel 419-629-2311
Fax 419-629-3796
crown.com

Because Crown is continually improving its products, specifications are subject to change without notice.

Crown, the Crown logo, the color beige, the Momentum Mark, Access 1 2 3, InfoLink, InfoPoint, V-Force, Wave, Work Assist Vehicle and the ecologic logo are trademarks of Crown Equipment Corporation.

Copyright 2016-2022 Crown Equipment Corporation
SF19382 Rev. 02-22
Printed in U.S.A.